

# Welcome

## THE CABINS

The CABINS at Lac des Plages comes with everything you need to enjoy a relaxing time away from the city.

This guide is designed to help you make the most of your vacation.

Lac des Plages



ADDRESS	CITY	POSTAL CODE	PHONE #
2055 Chemin Tour Du Lac	Lac des Plages Qc	J0T 1K0	(613)851-8499

**IN CASE OF EMERGENCY - DIAL 911  
YOU ARE AT 2055 CHEMIN TOUR DU LAC**

The nearest hospital is Hawkesbury - 57-minute drive - (613) 632-1111, 1111 Ghislain St, Hawkesbury, ON K6A 3G5

There is also a hospital in Gatineau - 58-minute drive - (819) 986-3341  
155 Rue Maclaren E, Gatineau, QC J8L 2M4



## W H O I S T R A I L S I D E C A B I N S ?

Trailside is the development of an idea from 3 partners who love the outdoors. Our goal is to provide unique lodging in or beside a trail. .

David is the mountain biker, Louis is the motorcyclist and Guy is the Side by Side enthusiast

The cabins is a property in the midst of all those type of trails.

As we travelled to ride, we hope you will enjoy the trails, the camaraderie and the accommodations to make this a memorable trip.

Thank you again, and welcome to Lac des Plages

## C O N T A C T I N F O R M A T I O N

### C O N T A C T

[trailside@365x.ca](mailto:trailside@365x.ca)



## D a v i d , G u y & L o u i s







## ABOUT THE PROPERTY

-The Cabins (7) were a covid project to keep our construction workers busy. We didn't know what to expect as Covid hit our construction company but we did know we could build those cabins and find a home for them.

The Cabins were originally set out to be installed in another forest but it became clear it made more sense to install them on our Lac des Plages property

The Cabins are located on 5 acres behind the church in it's own little forest.

There is a private beach within 500 meters and access to public hiking, mountain biking, snowshoeing trails on 143 acres of public land.

## SPECIFICATIONS

### SIZE

- 10 x24
- 6X8 Outside deck

### SLEEPING

- 1 Queen Bed
- Capacity to install a children's cot

### COOKING

- 2 Propane Cooking Elements
- 1 Fridge
- 1 Outdoor BBQ

### HEATING

- 1 Electric Heater
- 1 Woodstove







# What's Included

## INCLUDED IN YOUR RENTAL

The cabin kitchen includes a small fridge, 2 propane cooking element, a kettle, dishes, cutlery, pots and pans, casserole dishes. We expect you will find everything you need somewhere in the kitchen.

Outside you will find a BBQ,&Chairs .



## PROVIDED FOR YOU

### LINENS

*Each bed will have a fresh set of sheets on it with a pillow.*

### TOWELS

*Each guest will be provided with 1 bath towel and hand towel*

### OTHER - KITCHEN

*The kitchen has fresh cloths and tea towels, as well as paper towel, soap and other basic cooking amenities.*

### OTHER - BATHROOM

*The toilet is a propane incineration toilet. Please see the section on the toilet functionality.*







## YOU MAY WANT TO BRING...

### The Essentials:

- Food
- Drink

### Beach:

- Sunscreen
- Towel
- Hats
- Water shoes
- Bug spray (particularly in early June)

### Optional:

- Extra beach or bath towels?
- Books/Kindle/Kobo?
- Extra board games?
- Lifejackets - we provide those we have but if you have your own you may want to bring them
- Musical instruments

## FISHING?

- ☐ fishing permit
- ☐ rods/reels/hooks
- ☐ worms (can be obtained at Kenny's)

We ask that you take care in putting hooks away.

## BIKING?

- ☐ bike
- ☐ helmet
- ☐ water bottle
- ☐ backpack?
- ☐ bike pump/tool kit?

## SKIING?

- ☐ skis
- ☐ boots
- ☐ poles
- ☐ water bottle
- ☐ backpack?
- ☐ wax?

## WHAT ABOUT WATER?

The Cabins don't have running water, a 5 gallon will be provided to you.





# Getting Here

## DIRECTIONS

From Ottawa:

1. Make your way to Autoroute 50 East
2. Take the Montebello Exit to Mont-Tremblant
3. Follow the Route 323 for approximately 30 mins. Take the Lac des Plages exit
4. The parking is on Chemin de L'église and the parking lot of the church can also be used.

From Montréal

1. Make your way to Autoroute 15 Nord
2. Take the exit at Mount-Tremblant
3. Follow the Route 323 (south) for approximately 30 mins. Take the Lac des Plages exit

## ADDRESS

2061 Chemin  
Tour du Lac,  
Lac des Plages,  
Québec

---

# Upon Arrival

## WHEN YOU ARRIVE

The Cabins are located behind the church and the entrance is on Rue de l'Église.

As you pull in the closest door will have a key-code style lock on it. We will provide you with the code 24 hours before you arrive.

Check in time is any time after 4pm unless otherwise agreed to ahead of time.





# Cabin Rules<sup>1</sup>

## GENERAL

- |  |  |
|--|--|
| <ul style="list-style-type: none"><li>• No smoking</li><li>• No parties</li><li>• No animals</li><li>• Maximum of 16 guests</li><li>• Adults should not sleep on the top bunk bed.</li></ul> | <p>Please respect our neighbours and keep noise at a reasonable level particularly after 10pm.</p> <p>Please don't leave anything sharp on the beach or decks (fishing hooks for example).</p> |
|--|--|

## FIRES & FIREWORKS

We have a valid fire permit for recreational fires for 2024 (small campfires).

You are welcome to have a fire in the fire pit on the beach or in the fire pit on the west side of the property provided that there is no municipal fire ban in effect. To check this you can check the sign as you enter the village of Namur, or you can go online to: <https://lacdesplages.com/services-municipaux/securite-incendie->

As you can imagine, it would take a fire truck too long to get here to offer much help, so please be sure that you don't have a fire anywhere else, and please be sure to thoroughly put out your fire. Please don't leave your fire unattended. Please do not have a fire on a windy day especially if there is an onshore wind - embers/ash go directly towards the cottage and forest.

You are welcome to set off fireworks on the beach on Saturday evenings only, and again provided that no municipal fire ban is in effect.

Fire extinguishers are located in the hallways, bathroom and kitchen sinks.

## USE OF PONTOON RAFT

Use of the Pontoon raft is permitted with our electric motor that is housed in the Grotto. As you experience the force of the engine, you will quickly see you are not able to do a full boating trip other than putter around the bay.



# Phone

We do not have a phone system. Reception is good in our area for your cell phones.

# Wifi

## WIRELESS NETWORK

Network Name:

TrailsideCabins Guest

Password:

2023TrailSideCabins

or Scan the QR Code



# Boats

It is your responsibility to follow legal and safe boating practices! There is a bin with containers of throw ropes and bailing buckets on the porch - please have these with you.

Remember to bring canoes and kayaks a few feet out of the water each night to prevent them floating away if the water levels rise overnight.



# The Toilet

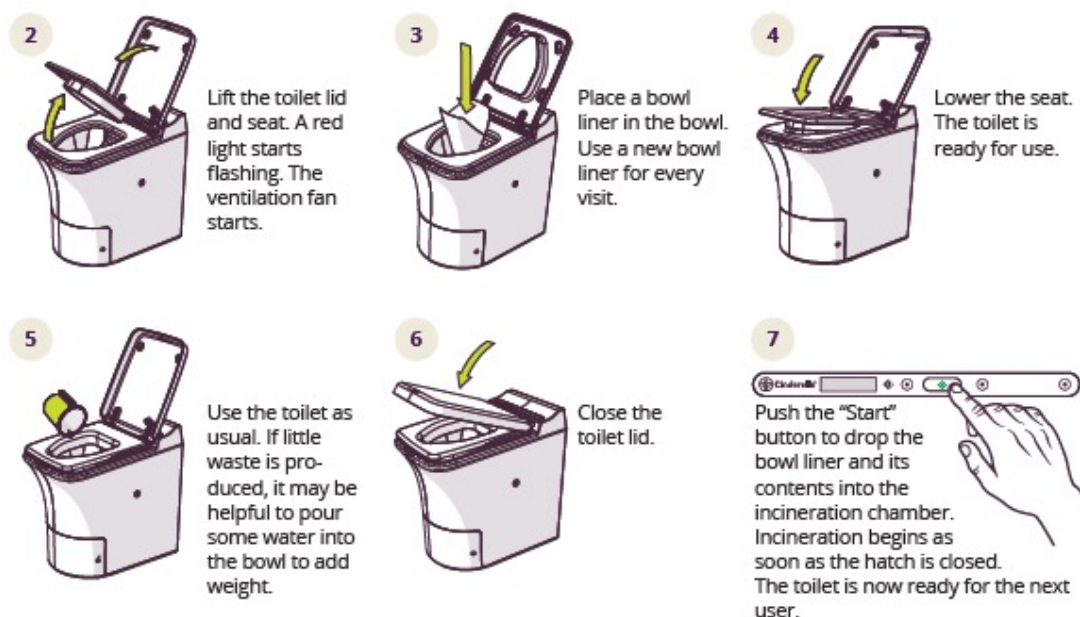
Get ready... The toilet is a propane incineration toilet. Your personal waste will be transformed to ashes!

Tested and certified, these toilets are simple to use if basic rules are followed. You will find all the simple instructions in the cabin.

## USING THE CINDERELLA TOILET



- 1 Check that the green light on the control panel is lit, indicating the unit is powered and ready for use.



- 8 A constant yellow light will display during active incineration. The toilet may be used at any point. This will temporarily interrupt incineration. Incineration time may vary based on the number of visits and amount of waste.

 Made in Norway

[www.cinderellaeco.com](http://www.cinderellaeco.com)

The most common problem with the toilet happens when the filter does not fall into the toilet when the hatch opens.

- Press the green  Icon for 10 Seconds for the toilet to reset
- Add some water as in step 5
- Flush again
- For more help: <https://www.cinderellaeco.com/ca-en/troubleshooting/comfort>



# The Showers

The Trailer home at 4 Chemin de l'église across the street from the cabins was bought specifically to provide shower amenities to the cabins occupants.

The Showers will eventually be moved to the basement of the Church... in the meantime this was our best option.

Please note there is a key box with the code 996633 to open the door. Please leave the bathroom as you would for yourself as other occupants will be using it.





# Power Outages

Power outages occur from time to time in rural Québec, most often after storms.

The cabin is not equipped with a generator at this time. The woodstove is still operational and candles with a lighter has been included in your cabin.

The toilet will not be operational and the toilet at the trailer house is available for your use.

If a power outage occurs, you can obtain an update on the expected restoration time by following the Hydro Québec website at <https://poweroutages.hydroquebec.com/poweroutages/service-interruption-report/laurentides.html#bis>

We have found Hydro Québec's estimates to be somewhat accurate (usually within an hour or so).



# Summer Activities

– Tremblant Area

## THE BEACH

Swim in the water. Build a castle in the sand. Play spikeball. Walk along the beach in either direction as far as it goes. The summer and winter roads are good for walks.



## THE TRAILS

The municipality bought 143 acres of Land within a 2 min walk. There are hiking, walking and mountain biking trails for 12km. There are 2 epic mountain bike trail networks in the Tremblant and Montebello Area. For ATV there is multiple trails in the area.

<https://www.quadpetitenation.ca/cartographie/>

## GOLF

The Laurentians has some of the best golf courses in Canada. You will find all of the high end courses near Tremblant and multiple other local courses in the small towns in the area.



## CHILDREN ORIENTED ACTIVITIES

For a low complexity, there is a municipal children's park a minute away. For a more adventurous time, Parc Omega has been a hit in our region <https://www.parcomega.ca/>. Parc Omega is a 25min drive from Lac des Plages. Tremblant also has multiple activities areas focused on kids.





# Winter Activities

- Lac des Plages

## SKATING ?

It depends on the year, so please check with us in advance, the municipality maintains the rink and are diligent in taking care of the ice. The risk is a short walk away from the house.



## CROSS COUNTRY SKIING ?

The lac des Plages trails are groomed for cross country skiing.



## SNOWSHOEING ?

The lac des plages trails have a lovely network of trails for the whole family.

## SKI ?

Lac des Plages is within 25 min of the biggest ski resort in Eastern Canada.

<https://www.tremblant.ca/things-to-do>

## FAT BIKING ?

The Lac des Plages trails are maintained for a nice 10Km of Fat biking.



# Possible Hazard

The ice - just because someone else is on it, doesn't mean it's safe.

# Food Options

- Lac des Plages

## MOULIN DU TEMPS (10 Mins)

10 min from Lac des Plages 'Au Moulin du Temps' is a family restaurant serving a full menu for breakfast, lunch and dinners. Their Oven cooked Pizza is amazing.

## KOKO CAFÉ (10 Mins)

Across from Moulin du Temps, KOKO café serves sandwiches and specialty coffees. It also sells Micro Brews and local jams.

## CHÉNÉVILLE (20 Mins)

You will find a subway, steak house, coffee shop and a large grocery store in this quaint little village.

## TREMBLANT (30 Mins)

You will find a multitude of restaurants from micro breweries to high end dining in the Tremblant Area



# Marché des Plages

Le Marché des Plages is a traditional convenience store with an array of items. It has a good selection of snacks, some grocery, gas/diesel/propane, an LCBO (alcohol), ice & more. Also worms if you're into fishing.





# Possible Hazards

## IN THE WATER

Please keep a close watch on children near the water due to the risk of drowning. DO NOT JUMP OR DIVE OFF THE DOCK. IT IS QUITE SHALLOW.

Nasty clam cuts hurt and take a long time to heal if you get them (from stepping on clams in the water). This is easily prevented by wearing water shoes. If you do get cut, clean the wound well and bandage it up to try to keep the sand out of it.

The pontoon raft is not made for long rides on the lake. It is intended to move a little deeper for a nice swim and have some fun with the kids. Please keep that in mind and bring paddles in case the battery runs out.

## IN THE WOODS

There has occasionally been poison ivy in the area of the forest. We try hard to keep this at bay as we have kids who like to play in the woods. If you're concerned about it though, then it may be best not to play in those woods.

There has been rare occasions of bear sighting in the Lac des Plages trails. We recommend to have parents with children of young age at all times.

The trail system has an elevation change of 200M. Although not hard it is still a good workout. Consider this as you make your adventure plans and who you are bringing with you.

The Mountain bike trails and hiking trails have different ratings and the expert ones are dangerous if you are not experience in mountain biking. We fully recommend getting off your bike and checking out the trail in any moment where you are unsure.





# Leaving Checklist

## ALL SEASONS

- ☐ Please close and lock all windows.
- ☐ Please take all of your food with you.
- ☐ Please put all of your garbage and recycling in the garbage / recycling bins.
- ☐ Please remove any sheets that need to be washed and place them on the bed
- ☐ Please return boats to the top of the beach where they were when you arrived.
- ☐ Please lock the doors on your way out.

There is no need to sweep/vacuum/mop as the cleaners will take care of this.

Please let us know by email if anything was broken, or if we are out of any essentials.

## WINTER

- ☐ Please set the main thermostat at 17 on the electric heater

## SUMMER

- ☐ Please place bed sheets on the bed

- ☐ Please hang wet towels in the bathrooms as best you can

## HOW WAS YOUR STAY?

We hope that you'll leave a review to help us out.

Wasn't so great? Please let us know what we could do better!

# We hope you had a fantastic stay!